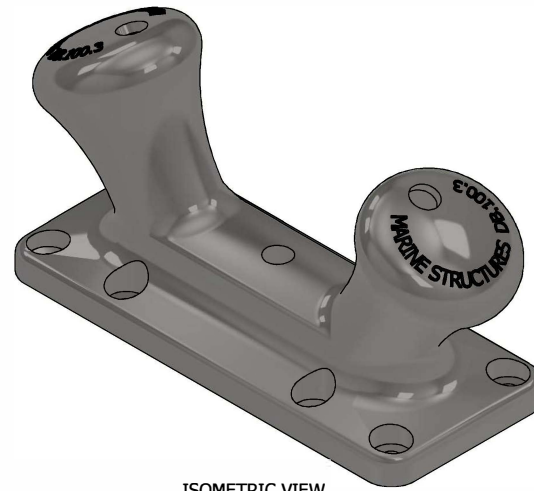
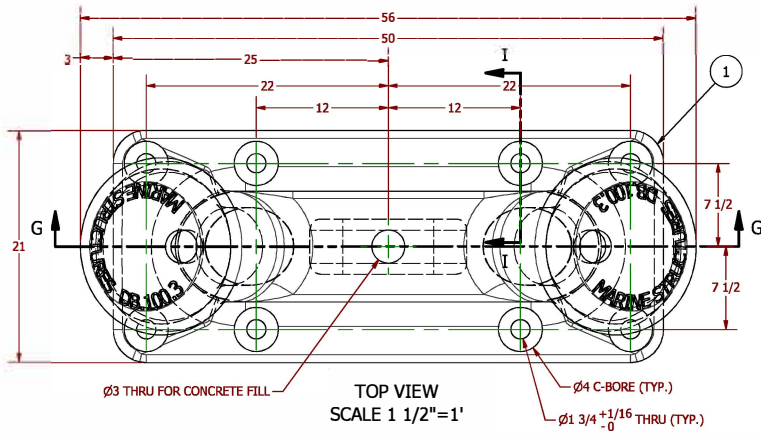
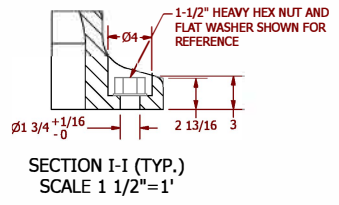
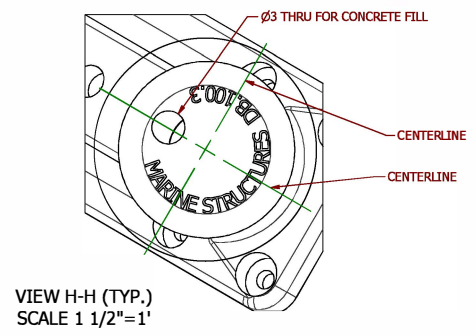
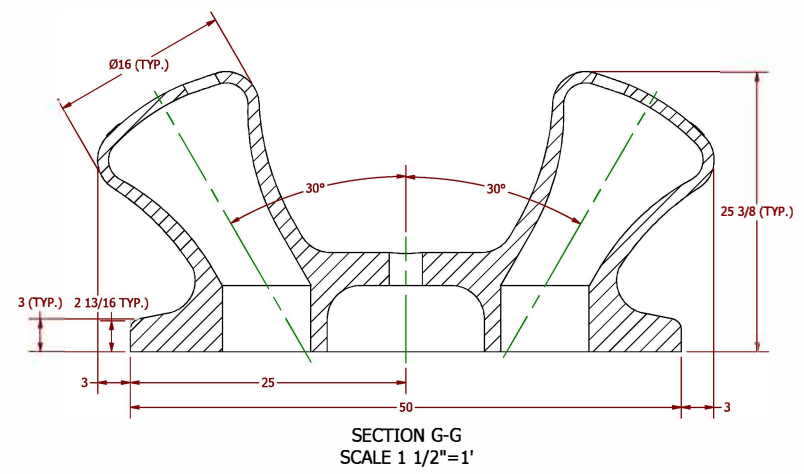
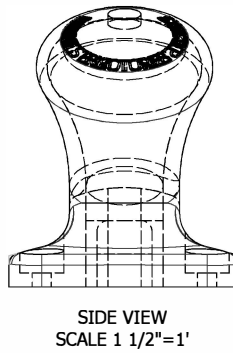
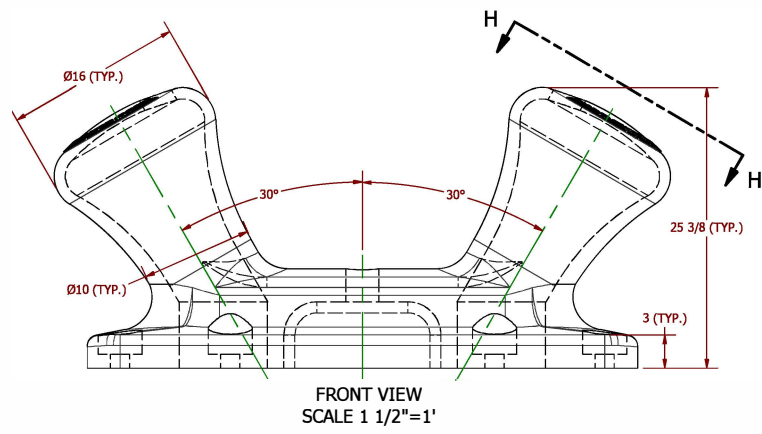


PARTS LIST			
ITEM	QTY	PART NUMBER	DESCRIPTION
1	1	DB.100.3	ASTM A27 GRADE 65-35 CAST STEEL



- NOTES:**
- LOAD AND SAFETY FACTOR:** THE MOORING BOLLARD HAS A LOAD RATING OF 100 METRIC TONS TOTAL (50 METRIC TONS PER BITT) IN THE DIRECTION OF 0 TO 60 DEGREES RELATIVE TO THE HORIZON, AND 0 TO 180 DEGREES RELATIVE TO THE WHARF FRONT. THE THEORETICAL POINT OF LINE LOADING IS THE INFLECTION POINT OF EACH INDIVIDUAL BITT PROFILE. THE MINIMUM YIELD FACTOR OF SAFETY IS EQUAL TO OR GREATER THAN 2. THE BOLLARD COMPLIES WITH CURRENT AISC STEEL CONSTRUCTION MANUAL REQUIREMENTS FOR COMBINED BENDING AND TENSION LOADS, AND SHEAR ONLY LOADS.
 - ANCHOR SPECS:** THE MOORING BOLLARD IS ANCHORED WITH 8 BOLTS OF 1-1/2 INCH DIAMETER. THE MINIMUM YIELD FACTOR OF SAFETY IS EQUAL TO OR GREATER THAN 2. ANCHOR BOLTS COMPLY WITH CURRENT AISC STEEL CONSTRUCTION MANUAL REQUIREMENTS FOR COMBINED TENSION AND SHEAR LOADS.



TOLERANCE (UNLESS NOTED)

Fractions:	± 1/16"
Angles:	± 1.0°
3 Place Decimals:	± 0.002"
2 Place Decimals:	± 0.01"

NOTICE
The information contained in this drawing is the sole property of Marine Structures, LLC. Any reproduction in part or as a whole without the written permission of Marine Structures, LLC, is prohibited. Drawings per spec by Marine Structures, LLC. These drawings are for domestic use only.

MARINE STRUCTURES
P.O. Box 433 - Morehead City, NC 28557 - Ph. 252.241.8823

PROJECT: MOORING BOLLARD, DB.100.3		SHEET SIZE: 18 x 24 (inches)	
CUSTOMER COPY, SHEET 1 OF 1		REV: 7	
DRAWING UNITS: INCHES	DWG NUMBER: BOLLARD-DB.100.3.idw	SCALE: NOTED IN VIEWS	DWG. SET SHEET: 4 OF 4